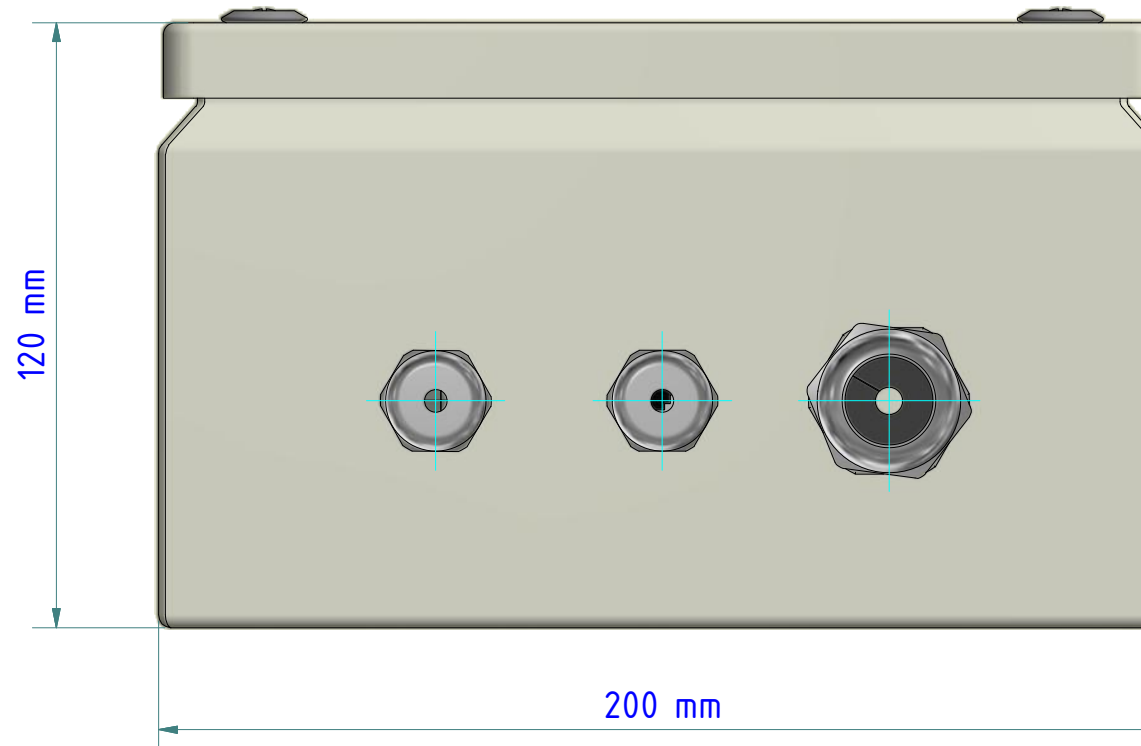
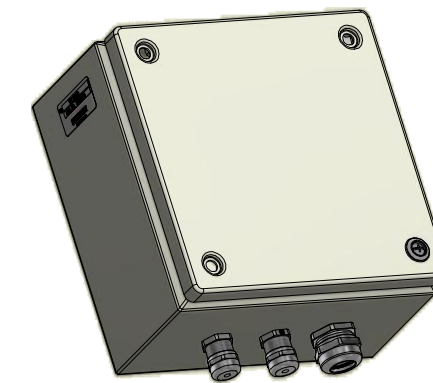


200 mm

### Klemme / Pin:

- |   |  |
|---|--|
| 1 | +24 V DC   |
| 2 | Masse / ground   |
| 3 | PE   |
| 4 | RS485 (A)  |
| 5 | RS485 (B)  |
| 6 | Signal Masse RS 485 / signal ground                                      |
| 7 | Schirm (nicht an PE Verbinden)<br><i>Shielding (not connected to PE)</i> |



120 mm

200 mm

#### Hinweis:

Es muss die gleiche Versorgungsspannung vom Pyrometer verwendet werden.

#### Note:

*It must be the same supply voltage used as the pyrometer.*

Gewicht: ..... Kg  
Weight: ..... Kg

Seite 1 von 1  
Page 1 of 1