

Staubblende PZ 10/T
Dust stop PZ 10/T
nr./no. 561257

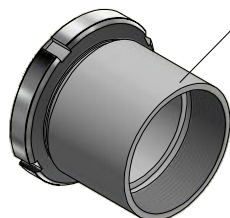
Zwischenrohr PZ 20/C
Intermediate tube PZ 20/C
nr./no. 561174

Befestigungsschelle PZ 20/L AF2
Clamping collar PZ 20/L AF2
nr./no. 561541

Kühlarmatur PZ 20/B AF5
Cooling jacket PZ 20/B AF5
nr./no. 561708

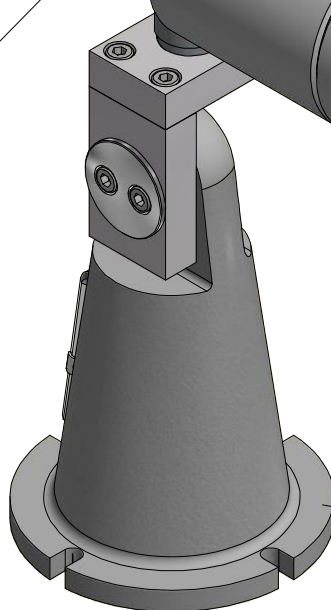
Axialluftdüse PZ 20/A AF1
Air purge PZ 20/A AF1
nr./no. 561176

PZ Profibus
Pyrometer



* PZ 20/J
nur bei Verwendung der Teleoptik einsetzen
* PZ 20/J
only to use by using the teleoptics

Halterung PB 08/K AF2
Clamping device PB 08/K AF2
nr./no. 1016808

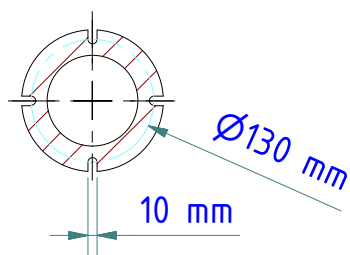


* mit PZ 20/J = 581 mm
with PZ 20/J = 581 mm

ca. 511 mm

Ø100 mm

A-A



Ø69,5 mm

A

A

335 mm

385 mm

Schlauchtülle G1/8"
für Schlauch mit lichter Weite 8 bis 9 mm
Hose nozzle G1/8"
for hose with inner width 8 to 9 mm