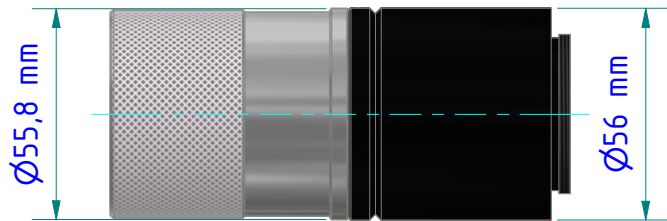
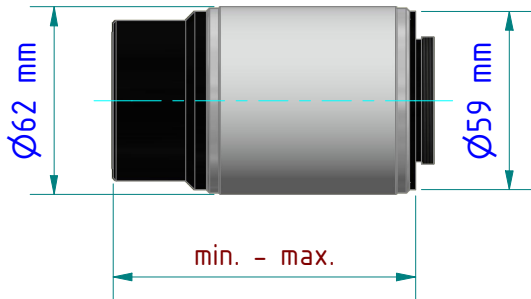


Optik Lens	min. [mm]	max. [mm]
Standard Optik PZ 20.01 Standard lens PZ 20.01	49,8	69,9

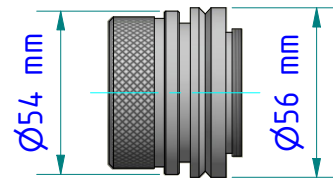
Weitere Optiken siehe Blatt 2  
further optics see sheet 2



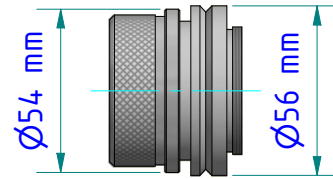
PA 20.06



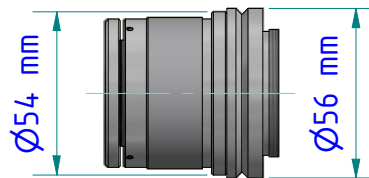
PA 40.01



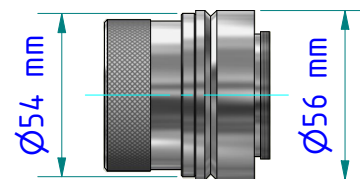
PZ 10.01



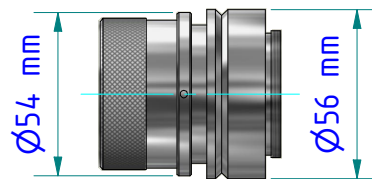
PZ 10.05



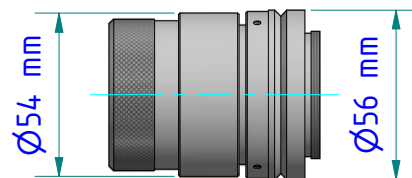
PZ 15.03



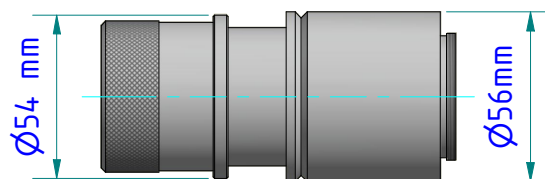
PZ 20.01



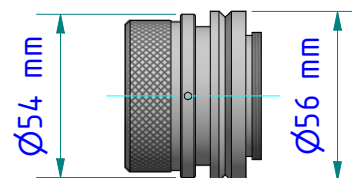
PZ 20.03



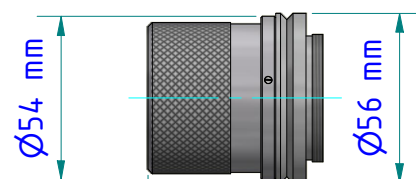
PZ 20.05



PZ 20.06



PZ 20.08



PZ 40.03

## Optik

### Le n s

	min. [mm]	max. [mm]
Super-Tele Optik PA 20.06 <i>Telephoto lens PAZ 20.06</i>	116,5	163,5
Makro Optik PA 40.01 <i>Macro lens PA 40.01</i>	100,5	155,3
Standard Optik PZ 10.01 <i>Standard lens PZ 10.01</i>	35,0	44,4
Nah Optik PZ 10.05 <i>close-up lens PZ 10.05</i>	35,0	44,4
Standard Optik PZ 15.03 <i>Standard lens PZ 15.03</i>	51,5	65,0
Standard Optik PZ 20.01 <i>Standard lens PZ 20.01</i>	49,8	69,9
Nah Optik PZ 20.03 <i>Close-up lens</i>	49,7	67,9
Weitwinkel Optik PZ 20.05 <i>Wide-angle lens PZ 20.05</i>	62,8	64,7
Tele Optik PZ 20.06 <i>Telephoto lens PZ 20.06</i>	93,0	112,0
Spezial Optik PZ 20.08 <i>Special lens PZ 20.08</i>	35,0	44,4
Panorama Optik PZ 40.03 <i>Panorama Optik PZ 40.03</i>	52,1	67,9